



A big welcome to our new Satellite Affiliate members,
all with shared goal of achieving accreditation!

Jennifer Burke – Tender Heart Childcare

Alexis Koonce – Next Up Learning Academy

Danielle Hendrix – A New Beginning Family Child Care

Congratulations on moving to Associate level with Satellite!

Jana Matush – Matush Family Daycare

Congratulations on
your first accreditation!



Natalie Williams – Little Smiles with Big Dreams

Congratulations on your Reaccreditation!



Mary Jo Flocca – Little Rascals Family Day Care



Ana Bertha Ramirez – Hogar Del Niño



Mery Mancera – Blue's Family Child Care

Annual Program Survey

A huge thank you to everyone who completed the Annual Program Survey!

Your responses told us that Satellite is overwhelmingly meeting your needs for support. Thank you! We know how important it is that we continue to improve and adjust to meet your needs, so we will use the Annual Program Survey feedback to:

1. Plan our 2024 professional development calendar.
2. Make improvements to our services.

We are happy to announce the winners of our survey response \$50 Visa gift card giveaway! **We received 34 responses to the survey; 30 people were eligible for the drawing because they provide their name*

- Jana Matuch
- Anastasia Rodriguez
- Maria Luisa Mas

LEARNING AND CONNECTING TOGETHER

Parade of Homes October 4th



Thank you, Tricia Nellen – Tricia’s Harmony House



Thank you, Shannon Davis – Let the Dragons Fly Child Care



Visual Clutter

Relevant Satellite Accreditation Standards

II. Physical Environment, Equipment, and Materials

B. Materials and equipment are developmentally suited and appealing to all children in the group.

6. Materials are located close to the place children are likely to use them, and children are able to find and replace materials on their own. For example:

- Shelves are uncluttered so that when a child removes an item, s/he can see where to replace it.



*Photos of Sarah's Littles Adventures in Playschool in Waukesha (Program Owner Sarah Cohan).

The Basics

What is clutter? Clutter describes a space filled with physical items in a disorganized manner and/or of an overwhelming amount. In other words, cluttered spaces have too much— on the walls, the ground, and the shelves:

- Decorations **that** overwhelm.
- Furniture **impeding** navigation.
- Too many toys and materials **inhibiting** play.
- **Bright, distracting colors.**

How does it affect development? Children's brains are still developing top-down control over their visual attention. Most adults can easily focus on a visual target, such as the bananas in the grocery store, while ignoring the apples, pears, and grapes. Children see and process all incoming visual information. In cluttered early learning environments, children's brains are strained, and research has shown this to affect attention, behavior, and well-being. Well organized, uncluttered spaces can be a tool for promoting learning, responsibility, and independence.

How do I declutter my space? The first step in assessing your space is to observe how children are interacting with it. Are the decorations meaningful to children's learning and placed at eye level? Do children feel confident in choosing activities, engaging in play, and cleaning up materials? Are infants and toddlers able to stay focused in play? Next, get creative with storage. Are there ways you could organize your materials to reduce visual input, such as opaque storage bins, curtains, or fewer superficial decorations? Decluttering your indoor and outdoor spaces will help create a calmer, more engaging learning environment.

I want to learn more!

- [Tips for Teachers: Designing Environments](#)
- [Family Child Care Environment Checklist](#)
- [Designs for Living and Learning](#)
- [Less is More: Taking Distractions Out of the Physical Environment](#) (available to [NAEYC Members Only](#))

Curriculum Philosophy Series

What is a curriculum? Curriculum is *what you do* in your program and what children learn as a result. It encompasses how children learn through intentional teaching practices, thoughtfully designed environments, play-based experiences, and teacher-directed activities. Curriculum guides educators to developmentally appropriate practices when teaching and caring for children.

What is a curriculum philosophy? Curriculum philosophy is an educational framework that *guides* what you do in your program. Curriculum philosophies, also referred to as approaches and methods, offer a set of values to consider when progressing toward desired child outcomes. The set of teaching beliefs lead the “*how*” of children’s learning.

Let’s talk about curriculum and family child care. We’re diving into five curriculum approaches, highlighting how each can be implemented in family child care programs. Where do your beliefs and passions align? You could become an expert in one curriculum philosophy or mold a combination into a unique philosophy that best suits your program. The curriculum philosophies covered in this series:

Children as the Co-Constructors of Their Own Learning: Emergent Curriculum in Family Child Care

November 15, 2023, 6 – 8pm Zoom [Register here](#)

Emergent Curriculum stemmed from the Reggio Emilia approach and is a flexible way of planning learning opportunities for young children. Emergent curriculum recognizes children as competent, curious learners and acknowledges that children learn best when given a say in their education. This results in a curriculum that is co-constructed by the educator and the child. In this training, we will discuss in depth how this can be implemented in family child care. (2 Registry hours)

Fostering True Play in Your Program: AnjiPlay in Family Child Care

January 24, 2024, 6 – 8pm Zoom [Register here](#)

AnjiPlay is an educational philosophy developed in China and centered around five interconnected principles – love, risk, joy, engagement, and reflection. AnjiPlay recognizes that children have the right to extended periods of self-directed, unguided true play. The AnjiPlay philosophy focuses on creating environments that can best support deep engagement in play. In this training, we will discuss how to apply this philosophy in family child care. (2 Registry hours)

Curriculum Philosophy Series Cont.

Nurturing Children's Imagination: Waldorf in Family Child Care

February 21, 2024, 6 – 8pm Zoom [Register here](#)

Waldorf is a curriculum approach rooted in nurturing children's imagination through creative expression. Storytelling is at the heart of Waldorf curriculum; educators are encouraged to use fables, fairy tales, and myths for teachable moments. Waldorf education concentrates on hands-on learning through art, dance, and music in sensory rich environments. In this training, we will discuss how the Waldorf approach may be a good fit for your family child care program. (2 Registry hours)

Building Children's Independence: Montessori in Family Child Care

March 20, 2024, 6 – 8pm Zoom [Register here](#)

Montessori is an educational method centered on five key areas of study: practical life, sensorial, mathematics, language, and culture. It uses independent hands-on work as a method of teaching real-world skills and emphasizes individualized pacing of curriculum. The Montessori method is best implemented in a multi-age setting where children can develop mentoring relationships. In this training, we will dive into how the Montessori philosophy can be adapted for family child care programs. (2 Registry hours)

Children as Naturalists: Forest School in Family Child Care

April 17, 2024, 6 – 8pm Zoom [Register here](#)

Forest School is a nature-based approach to early childhood education that prioritizes frequent sessions of unstructured play in natural wooded areas. The Forest School approach supports risk taking in play, nurturing both children's independence and self-confidence. This philosophy recognizes children's innate desire to connect with the natural world. In this training, we will discuss how you can adapt this approach to family child care settings to promote new forms of discovery in nature. (2 Registry hours)

This opportunity is available to you through Satellite Family Child Care System, a YoungStar Connect Partner.



Satellite Professional Learning Calendar 2023 – 2024

Dates	Time	Event	Location	Registration	Registry hours*	
November 15	6-8 pm	Curriculum Philosophy Series – Part 1: Children as the Co-Constructors of Their Own Learning: Emergent Curriculum in Family Child Care	Zoom	Register here! by 11/13/23	2	E, Sp
December 5	1-2 pm	Exploring Quality in Family Child Care: Risky Play	Zoom	Register here! by 12/1/23	1	E, Sp
January 11 – February 29	1-2 pm	Guided Book Study (<i>English only</i>) Lisa Murphy on Play: The Foundation of Children’s Learning	Zoom	Register here! by 12/18/23	16	E
January 16	1-2 pm	Exploring Quality in Family Child Care: Process Art	Zoom	Register here! by 1/12/24	1	E, Sp
January 24	6-8 pm	Curriculum Philosophy Series – Part 2 Fostering True Play: AnjiPlay in Family Child Care	Zoom	Register here! by 1/22/24	2	E, Sp
February 13	1-2 pm	Exploring Quality in Family Child Care: Child-directed Play	Zoom	Register here! by 2/9/2024	1	E, Sp
February 21	6-8 pm	Curriculum Philosophy Series – Part 3 Nurturing Children’s Imagination: Waldorf in Family Child Care	Zoom	Register here! by 2/19/24	2	E, Sp
March 12	1-2 pm	Exploring Quality in Family Child Care: Background Noise	Zoom	Register here! by 3/8/24	1	E, Sp
March 20	6-8 pm	Curriculum Philosophy Series – Part 4 Building Children’s Independence: Montessori in Family Child Care	Zoom	Register here! by 3/18/24	2	E, Sp
March 7 – April 25	1-2 pm	Guided Book Study (<i>English only</i>) Last Child in the Woods: Saving our Children from Nature-Deficit Disorder	Zoom	Register here! by 2/12/24	16	E
April 9	1-2 pm	Exploring Quality in Family Child Care: Visual Clutter	Zoom	Register here! by 4/5/24	1	E, Sp
April 17	6-8 pm	Curriculum Philosophy Series – Part 5 Children as Naturalists: Forest School in Family Child Care	Zoom	Register here! by 4/15/24	2	E, Sp

Key



Language

E English

Sp Spanish

Obtaining Registry Credit* for Satellite’s Virtual (Zoom) Professional Development Sessions

To receive Registry credit at the conclusion of virtual (Zoom) professional development, follow these steps:

1. Each participant must register individually even if viewing the training with other participants on the same screen.
2. You must be present for the entire session. Late arrivals may not be admitted.
3. At the conclusion of the session, you complete an evaluation and then enter your information to receive Registry credit. This must be completed at the end of the session or your professional development hours will not be entered into the Registry by Satellite Family Child Care System. **

You can view and print your proof of attendance through your [Wisconsin Registry](#) account. It may take several weeks before your attendance is entered into the Registry. Certificates of completion will not be mailed or emailed to participants.

**If you do not complete the steps above and wish to receive professional development credit for a Satellite event that you attended, you will need to complete the DCF form “Continuing Education Record—Independent Reading/Video Viewing “ found here:

<https://dcf.wisconsin.gov/cclicensing/ccformspubs>

Satellite's Mentorship Program



Satellite Family Child Care System is pleased to announce that we are revitalizing our mentorship program piloted late last year! This program connects experienced Satellite family child care providers, mentors who will be invited to participate, with those who are searching for guidance on the complex inner workings of family child care. This is a voluntary opportunity for professional growth and personal connection!

If you are interested in becoming a mentee, meaning you will be paired with a mentor identified by the Satellite team, [please take this survey!](#)

Do you have information to share with our community?

Submissions of the following are welcome:

- Photos and video of your program or an activity (be certain you have photo release forms on file)
- Program news
- Events connected with your program
- Celebration of educational milestones, like the completion of a degree or credential
- Awards received

Submit items for the newsletter to Laura Simkin: lsimkin@reachdane.org

Submissions may be edited and/or adjusted for length.

LEARNING AND CONNECTING TOGETHER

Erikson Institute

town square

on your own. but not alone.

Get help, information and support at Town Square
You have unique challenges in balancing the needs of your home and your business. Town Square is a website dedicated to supporting you in providing high-quality care for all children while operating a thriving business.

The resources and features on Town Square are all free. They're organized so you can find answers and get help quickly. The site, also mobile friendly, is a great way to stay connected to your colleagues and other professionals so you never feel alone

Category: Perspectives
Provider Blog — Outdoor Meditation and Yoga
+CORK BOARD

Category: Wellness
Know the facts about RSV
+CORK BOARD

Category: Learning
You might think that I'm just playing, but...
+CORK BOARD

ENGLISH
ESPAÑOL

Category: Perspectives
Provider Blog — Washing Dishes
+CORK BOARD

Category: Wellness
Trauma informed care
+CORK BOARD

Category: Perspectives
Provider Blog — Self Portraits: Outside!
+CORK BOARD

<http://www.townsquareWI.org>

LEARNING AND CONNECTING TOGETHER

Satellite members have full access to Satellite's equipment and curriculum units. Check the link below regularly to view our full lending options. When you sign up for equipment and units, your consultant will inform you of whether the item is available immediately or if you're on the waitlist.

Pick-up and drop-off of equipment and units occurs during consultant visits to your program. Additional exchanges of equipment and units may occur at the Satellite office. Communicate with your accreditation consultant to determine a day and time when Satellite staff are present.

Satellite Equipment, Units and Book Loans

NEW Rainbow Rollers (Set of 6)



Little Rocker



Toddler Play Table

LEARNING AND CONNECTING TOGETHER

New & Updated Curriculum Units

[Link to Unit and Equipment List](#)

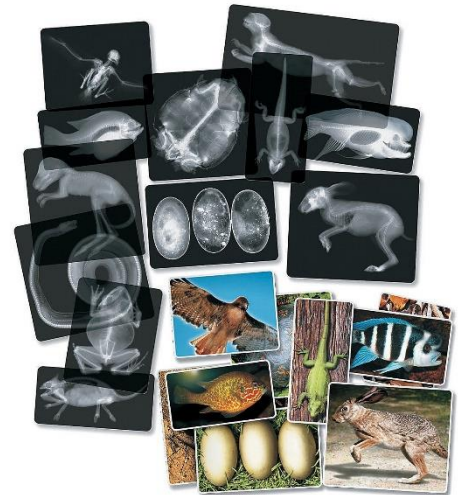
Bugs Unit



Toddler Natural Loose Parts



Light Table
Accessory Set:
X-Rays



Wheels & Axels



LEARNING AND CONNECTING TOGETHER

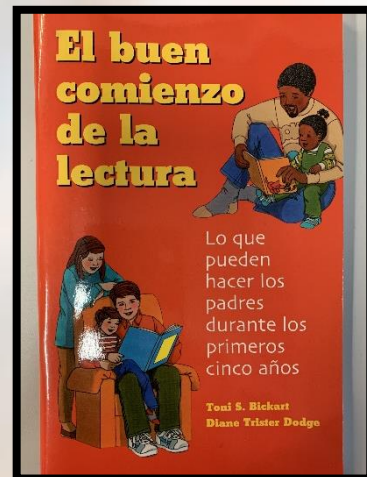
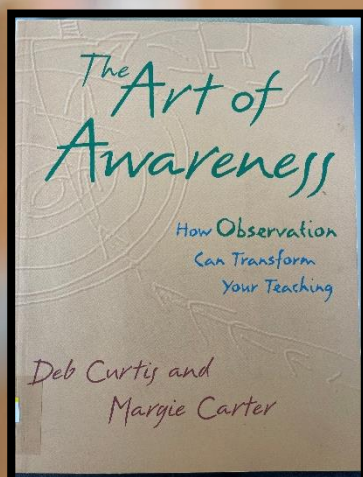
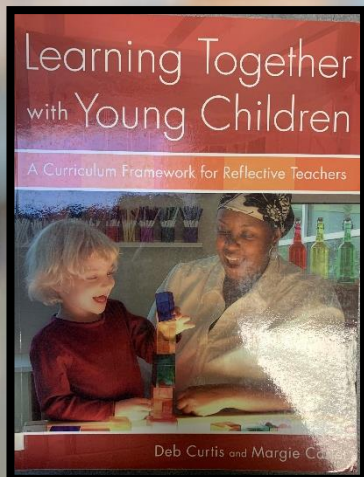
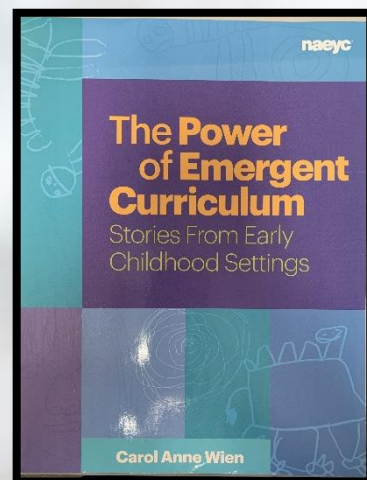
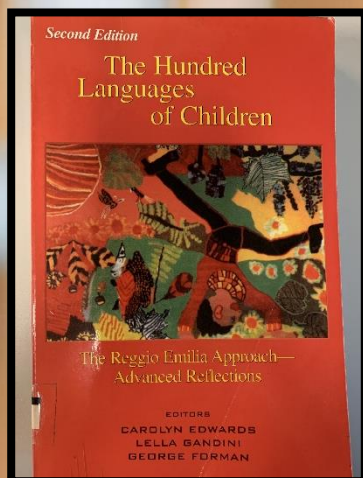
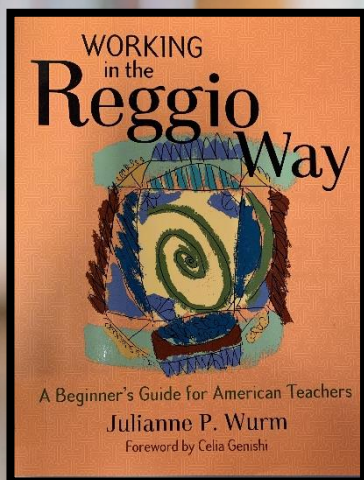
EARLY CHILDHOOD EDUCATOR RESOURCE LIBRARY

100+ books

Satellite members have full access to Satellite's early childhood educator resource books. Check the link below to view our full lending options.

Satellite Equipment, Units and Book Loans

When you choose a book, your consultant will inform you of whether the item is available immediately or if you're on the waiting list.





Kids deserve the best.

National Fire Prevention Week was Oct. 8-14. This year's theme is cooking safety. Did you know that cooking is the No. 1 cause of home fires in the United States? Children's Wisconsin has a great tip sheet for [teens in the kitchen](#), although there are great safety reminders for all. Please also download and share this [fire safety at home sheet](#). You can find more information about [Fire Prevention Week](#) here.

Child Passenger Safety (CPS) Week took place in September, but as we all know, child passenger safety is a year-round topic. Remind parents that it is vital to make sure your child is in the right seat and that it's installed and used correctly. For tips to keep kids as safe as possible in the car, visit childrenswi.org/carseats. Let your community know that parents and caregivers can schedule a car seat appointment at one of the many [Wisconsin car seat check and installation sites](#).

Reminders for child pedestrians:

1. Cross the street from corner-to-corner. When possible, use traffic signals and crosswalks.
2. Look left, right, and left again before crossing.
3. Look for traffic on the road beside you at an intersection, not just left and right.
4. Walk, don't run across streets.
5. Make eye contact with drivers before you cross in front of their car.
6. Don't wear headphones or ear buds while walking and put away your cell phone so there are no distractions.
7. When you can, walk on sidewalks or paths. If there are no sidewalks, and you have to walk on the side of the road, face traffic and stay far left.
8. The quickest route is not always the safest. Take the time to map the safest route to school and to friends' houses.
9. Treat driveways just like roads. That means stop and look to make sure there are no cars backing out or pulling into driveways. Be on the lookout for hidden driveways and alleys.
10. When around train tracks, take off all music and put away all electronic devices to make sure you're paying full attention at train crossings.

Reminders for drivers:

- Watch your speed – especially in residential and school zones.
- The speed limit in school zones is 15 miles per hour.
- Always mind cross walks on roadways and watch for pedestrians on right turns.
- Pedestrians ALWAYS have the right of way.

Paperwork, Paperwork, Paperwork!

There is a lot of documentation to keep track of. Become familiar with Satellite's documentation requirements:

<i>Document</i>	<i>Frequency</i>
<input type="checkbox"/> Health report and TB test	<i>Complete within 1 year of enrollment, before reaching associate status</i>
<input type="checkbox"/> Home Safety Checklist	<i>4 times per year. Providers begin quarterly checks on this list when they become an affiliate provider. All items must be met before accreditation and consistently thereafter.</i>
<input type="checkbox"/> Liability Insurance	<i>Submit annually upon reaching associate status</i>
<input type="checkbox"/> Car Insurance	<i>Submit annually if transporting children</i>
<input type="checkbox"/> Quarterly survey	<i>4 times per year for those in and around Dane County.</i>
<input type="checkbox"/> Animal vaccinations	<i>Submit annually (if applicable)</i>
<input type="checkbox"/> Confidentiality release (information exchange between program and Satellite consultant)	<i>All newly enrolled children in program-or-included in program's policies</i>
<input type="checkbox"/> Continuing Education Record	<i>20 hours annually</i>
<input type="checkbox"/> Mandated Reporter Training	<i>Every 2 years</i>
<input type="checkbox"/> CPR	<i>Every 1 or 2 years (depends on expiration date on CPR card)</i>
<input type="checkbox"/> Program Policies	<i>Reviewed with each (re)accreditation</i>
<input type="checkbox"/> Parent/Provider contract	<i>Reviewed with each (re)accreditation</i>



Business Plan Fundamentals

Presented by:
Marjorie Mallard
Consulting Services

Live Web Event
11/11/2023 at 11:00 AM (EDT)

NAFCC PD ACADEMY

Register at
<https://learn.nafcc.org/>

NAFCC
National Association for Family Child Care

Family Child Care Educators,

Register for NAFCC's upcoming PD Academy Course! Business Plan Fundamentals.

Learning Objectives

In this session, you'll learn how to:

1. Childcare business owners will have a solid understanding of business planning, and its significance.
2. How it can directly benefit their childcare businesses.

Professional Resources

Satellite Services

- [Mentor Program](#)
- [Satellite new member application](#)
- [Resource loans—equipment, curriculum units, & resource books](#)



Wisconsin

- [T.E.A.C.H. Scholarship Program](#)
- [REWARD Stipend Program](#)
- [Wisconsin Early Childhood Shared Services Network \(WEESN\)](#)
- [The Wisconsin Registry](#)
- [Educator Assistance Program](#)
- [Child Care Forms and Publications \(Licensing\)](#)
- [YoungStar Connect](#)
- [Early Childhood Mental Health Consultation](#)



Professional Organizations focused only on Family Child Care

- [Wisconsin Family Child Care Association](#)
- [Home Grown](#)
- [National Association for Family Child Care](#)



The November Financial Wellness session is:

Setting Financial Boundaries! Balance the relationship between your finances, your loved ones, and yourself. Learning to properly set financial boundaries can not only help shield your finances, but it can also protect your relationships and your mental health. Setting financial boundaries might look like breaking a cycle of dependence with a loved one, setting boundaries with yourself to reach your financial goals, or communicating with friends and family your financial limits. This session will cover why setting boundaries is important, how to identify where your boundaries are, and how to set them in your life.

Live Session: 11/08 @ 11:30 AM [Link to Register!](#)

(Use "Reach Dane" as the organization with whom you're affiliated)



Use this [letter-writing portal](#) to **tell your state elected officials to invest significant state revenue into child care.** Without action, Wisconsin risks a deepening crisis: programs forced to raise rates and consider closing, added financial strains for working families, and the workforce and economic consequences that will result. Send a letter to tell your state elected officials it is their job to ensure child care providers, young children, families, and the economy receive the support they need, especially with more than \$4 billion in state surplus available.

weca Wisconsin Early
Childhood Association

[Early Childhood Workforce Support and Resources](#)

 **Raising
Wisconsin**

[Wisconsin State Budget Advocacy](#)

OUR COMMUNITY

Join the Community

Satellite Family Child Care Circle

A virtual space for Satellite family child care providers to connect, learn, and share. This group is only for providers affiliated with Satellite Family Child Care System. We want this to be your space to share ideas, photos, activities, and more!

For more information, please contact:



Grace Eilers

geilers@reachdane.org

(608) 400-2823



Noche Latina

A monthly event for Spanish speaking, Satellite affiliated family child care providers and their families held at Satellite's office. Noche Latina focuses on building a network of supportive relationships among Latina providers and their families. We also have a lot of fun!

For more information, please contact:



Estella Vargas

evargas@reachdane.org

(608) 852-7724



OUR COMMUNITY

Satellite believes in the power of community. Consider attending a family child care provider-led group affiliated with Satellite. Participation in all support groups is a benefit of Satellite and completely voluntary.

Arcoiris

The purpose of the Arcoiris support group is to provide meetings with child care providers. The goal of the Arcoiris support group is to share resources with each provider who attends the meetings. There is no cost to the Arcoiris support group for providers who want to attend. Meetings are the third Friday of every month from 6:30-8:30 pm. Meetings are usually at a Madison-area provider's home, but can also be at a restaurant, park, library, etc. For the meeting, each provider is invited to bring a dish, dessert, or drink to share. During the meeting, the food that has been provided is shared. Ideas, resources, situations are also shared and new providers who are attending the meeting are introduced. The Arcoiris support group maintains confidentiality inside and outside the meetings of all topics discussed. This group is conducted in Spanish.

For more information, please contact:



Margarita Ugalde

ugaldemargarita7@gmail.com

Sojourn

Sojourn is a community of accredited family child care professionals who empower one another to reach their own unique potential through person connections, reflective process, and shared leadership. We strive for a balance between personal and professional issues in our discussions. We use a shared leadership model for Sojourn meetings which allows each member to grow and participate in various roles. Join Sojourn to build relationships with other professional child care providers, experience professional growth through group process responsibilities, and participate in discussion about family child care issues. This group is conducted in English and meets in the Madison area.

For more information, please contact:



Shannon Davis

badgerclan2@gmail.com

Chris Torres

rctorres8881@gmail.com



SATELLITE ADVISORY COMMITTEE

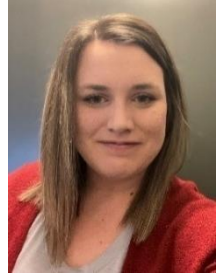


Shannon Davis

Advisory Committee Member
Accredited Family Child Care Provider

Mykenzie Lerg

Advisory Committee Secretary
Satellite Consultant
(608) 843-5378
mlemberger@reachdane.org



Tammy Ocampo

Advisory Committee Member
Community Member with the
Madison Public Library
Former Satellite parent



Fernanda Leporace

Advisory Committee Member
Community Member with
WECA
Former Accredited Provider

Satellite Advisory Committee

Satellite deeply values input from those within the family child care community.

At each Advisory Committee meeting, the facilitator presents information about Satellite's support services and/or accreditation and then asks committee members related open-ended questions. Committee members are encouraged to use their unique backgrounds, personal and professional roles, and experiences as they share their perceptions and ideas.

Satellite's facilitator actively listens with the goal of utilizing committee members' expertise and experiences to strengthen the Satellite Family Child Care System.



Nancy Rosales

Advisory Committee Member
Accredited Family Child Care Provider

Laura Simkin

Advisory Committee Facilitator
Satellite Associate Director
(608) 381-2676
lsimkin@reachdane.org



Terri Lynn Alexander

Advisory Committee Member
Accredited Family Child Care Provider

Abby Abrisham

Advisory Committee Member
Retired Satellite Accredited
Family Child Care Provider



Maria Luisa Mas

Advisory Committee Member
Accredited Family Child Care Provider

SATELLITE STAFF



Estella Vargas

Accreditation Consultant
Bilingual (Spanish/English)
(608) 852-7724
evargas@reachdane.org



Amy Christianson

Language Access, Curriculum, and
Satellite Director
achristianson@reachdane.org



Jen Jorgensen

Accreditation Consultant
(608) 416-9531
jjorgensen@reachdane.org



Laura Simkin

Satellite Associate Director
(608) 381-2676
lsimkin@reachdane.org
*Contact Laura with all general questions
related to accreditation and Satellite services.*



Rachel Halstead

Accreditation Consultant
(608) 690-0174
rhaldstead@reachdane.org



Grace Eilers

Family Child Care Content Specialist
(608) 400-2823
geilers@reachdane.org

Jessica Roberts

Accreditation Consultant
(608) 416-3996
jroberts@reachdane.org



Mykenzie Lerg (Lemberger)

Accreditation Consultant
(608) 843-5378
mlderg@reachdane.org

CONFIDENTIALITY

Satellite staff keep confidential within Satellite your program's information that you share with your accreditation consultant, the Satellite director and associate director. This information is documented in records of contact that only Satellite's staff access. Satellite's team works together, harnessing our collective skills and knowledge to support your program.

Need assistance? Contact us so we can help!

Satellite
(608) 275-6740

satellitelfcc@reachdane.org

Mailing and drop-off address:
2096 Red Arrow Trail, Fitchburg, WI 53711

*Label mailed and dropped off items with "attention:
Satellite" & and the Satellite staff person's name*